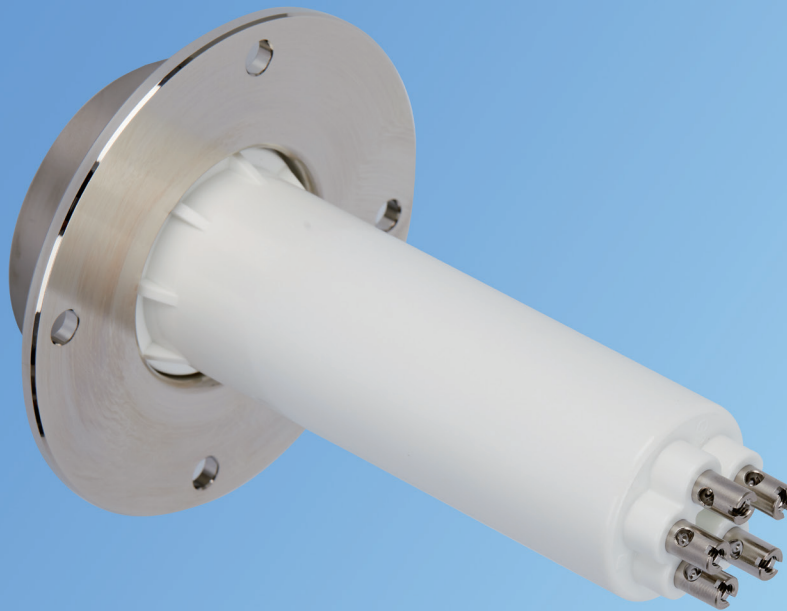


| VERTEX-A™ VR-A1 Generator Receptacle for up to 100kVDC



APPLICATION

The VERTEX-A™ VR-A1 is a medical high-voltage socket assembly for angiography X-ray equipment applications.

STANDARD

Enterprise standard for DC high-voltage cables for X-ray equipment.

FEATURE

- Nickel-plated brass terminals with O - ring direct injection molding socket for excellent oil seal performance.

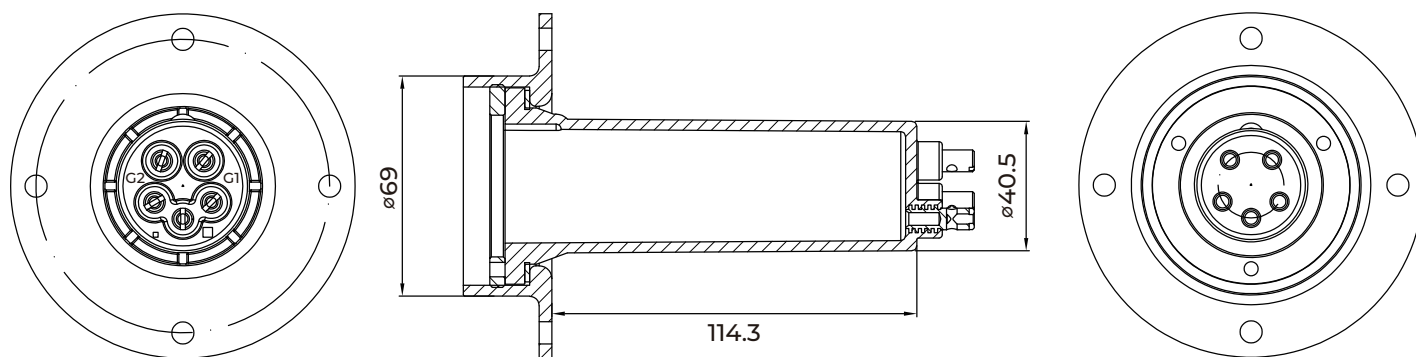
- The thermoplastic material with high flame retardant grade, high insulation resistivity and high temperature resistance is adopted.
- Brass thrust ring with adjustable wrench hole.
- Flat rubber washer for oil seal.
- Nickel plated brass flange.
- RoHS & REACH compliant.

MAIN TECHNICAL DATA

SPECIFICATION	REQUIREMENTS
Cores	5
Rated voltage between pin and flange	75kVDC
Type test voltage between pin and flange	150kVDC/15min
Rated voltage between pins	4.3kVACrms
Type test voltage between pins	6kVACrms/15min
Insulation resistance between pins	$>10^{15} \Omega$
Insulation resistance between pin and flange	$>10^{15} \Omega$
Maximum conductor current	25A
Maximum continuous operating temperature	130 °C
Air tightness	0.304MPa

DIAGRAM

VERTEX-A™ VR-A1



HIGH-PERFORMANCE CABLE SOLUTION

TWB-Germany GmbH

Add: Kolonnenstr.8, 10827 Berlin, Germany

E-mail: rolf.kaiser@twb-germany.com

Tel: +49 171 5544253

URL: www.twb-germany.com

The data in this document is for reference only. Contents in this document are subject to change without notice.