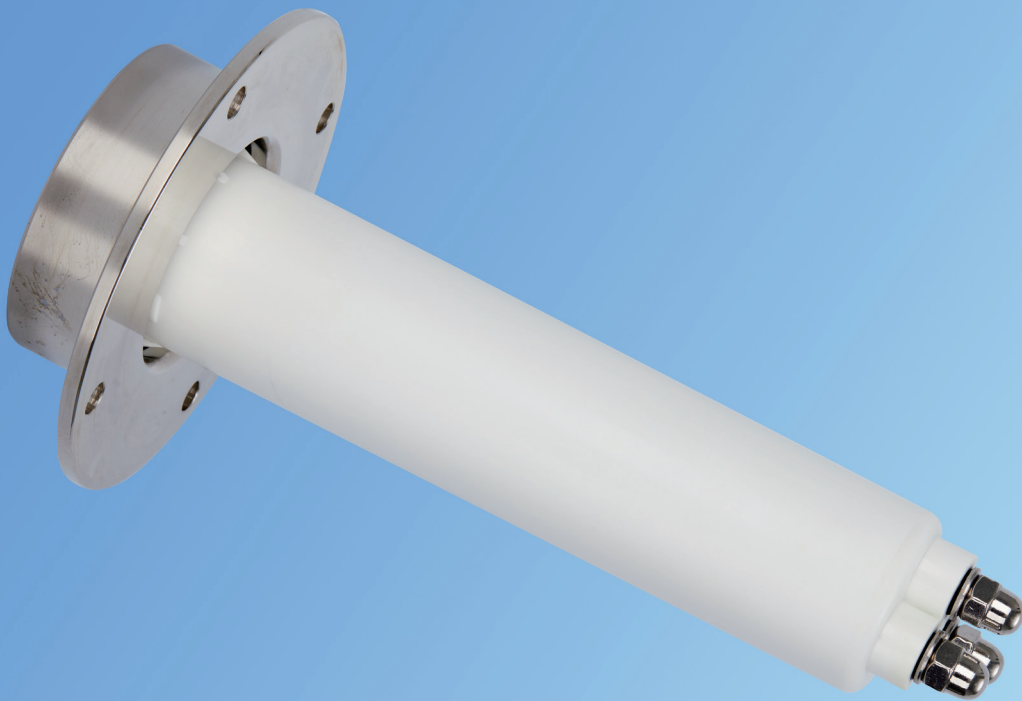


VERTEX-CT™ VR-N4 Generator Receptacle for up to 160kVDC



APPLICATION

The VERTEX-CT™ VR-N4 is a medical high-voltage socket assembly for computed tomography equipment applications.

STANDARD

Enterprise standard for DC high-voltage cables for X-ray equipment.

FEATURE

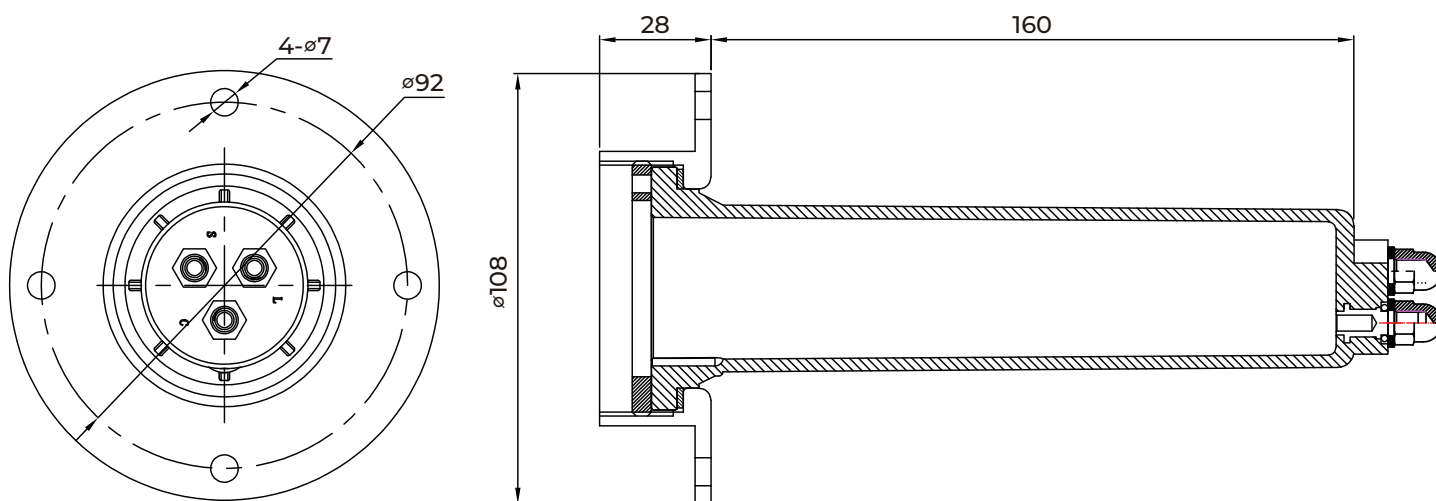
- Direct injection molded socket with nickel-plated brass terminals with O-ring seals, offering excellent oil sealing performance.
- High flame retardancy, high insulation resistance, and high temperature resistant thermoplastic materials are used.
- RoHS & REACH compliant.

MAIN TECHNICAL DATA

SPECIFICATION	REQUIREMENTS
Cores	3
Rated voltage between pin and flange	160kVDC
Test voltage between pin and flange	200kVDC/15min
Insulation resistance between pins	$>10^{15}\Omega$
Insulation resistance between plug and flange	$>10^{15}\Omega$
Maximum Conductor Current	25A
Maximum continuous operating temperature	130 °C
Airtightness	0.304MPa

DIAGRAM

VERTEX-CT™ VR-N4



HIGH-PERFORMANCE CABLE SOLUTION

TWB-Germany GmbH

Add: Kolonnenstr.8, 10827 Berlin, Germany

E-mail: rolf.kaiser@twb-germany.com

Tel: +49 171 5544253

URL: www.twb-germany.com

The data in this document is for reference only. Contents in this document are subject to change without notice.