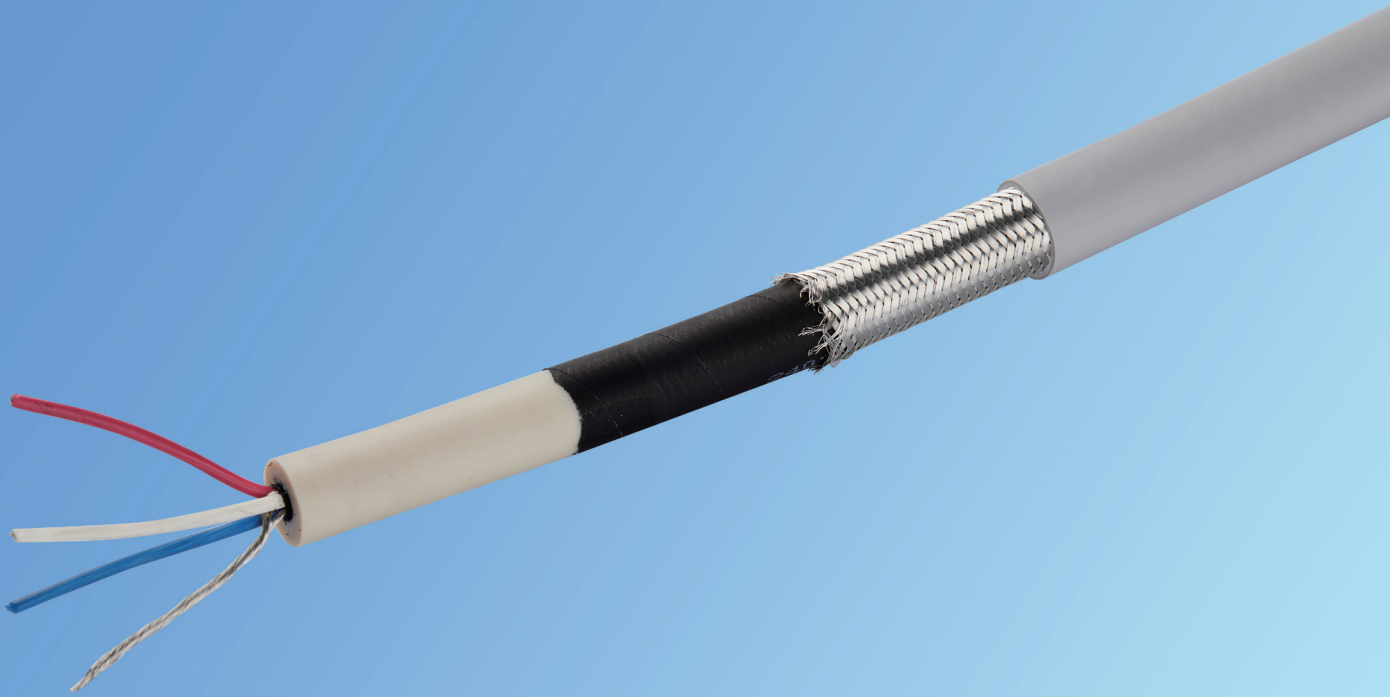




HIGH-PERFORMANCE CABLE SOLUTION

VERTEX-CT™ VTX-C1-type 75kVDC rated High Voltage Cable



APPLICATION

The VERTEX-CT line is designed specifically for computed tomography equipment applications.

STANDARD

Enterprise standard for DC high-voltage cables for X-ray equipment.

FEATURE

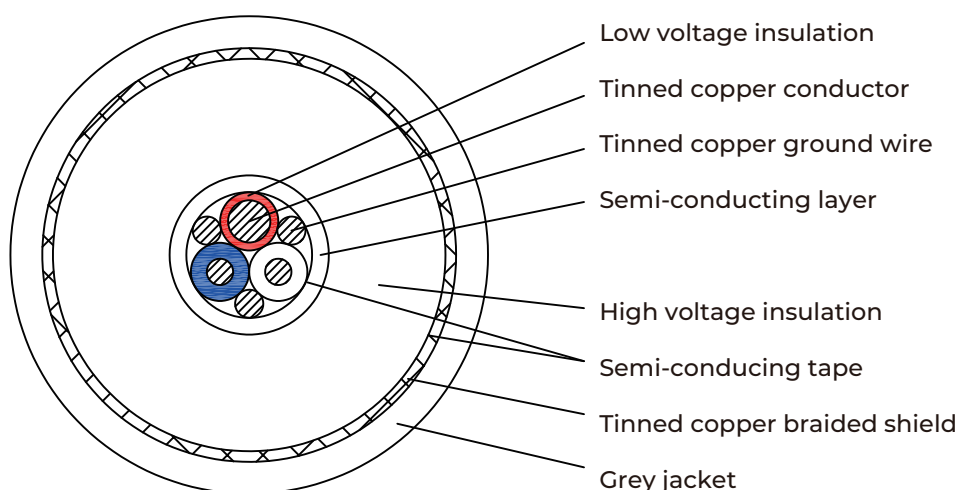
- Low capacitance.
- High flexibility.
- Small diameter.
- 95% cable shield braid density.
- RoHS & REACH compliant.

MAIN TECHNICAL PARAMETER

SPECIFICATION	REQUIREMENTS
Rated voltage	75kVDC
General test voltage (high voltage insulation)	120kVDC/10min
Rated voltage (conductor insulation)	2kVAC
Maximum conductor current	1.5mm ² : 16A , 0.5mm ² : 9A
Nominal outside diameter	19.0±0.5mm
Insulation resistance of conductor core to shield at 20 °C	≥1×10 ¹² Ω·m
Conductor resistance DC at 20 °C	38.5mΩ/m±10%
Bare ground wire resistance DC at 20 °C	11.4mΩ/m±10%
Capacitance between conductor and shield	165±15pF/m
Minimum static bending radius	<45mm
Minimum dynamic bending radius	<90mm
The cable has undergone 100000 bending and twisting cycles	normal operation
Transportation and storage temperature	-40 °C~+70 °C
Operating temperature	-10 °C~+70 °C
Net weight	409kg/km

DRAGRAM

VERTEX-CT™ VTX-C1



Red Insulation is 1.5mm², White & Blue Insulation is 0.5mm², Ground wire is 1.5mm².



HIGH-PERFORMANCE CABLE SOLUTION

TWB-Germany GmbH

Add: Kolonnenstr.8, 10827 Berlin, Germany

E-mail: rolf.kaiser@twb-germany.com

Tel: +49 171 5544253

URL: www.twb-germany.com

The data in this document is for reference only. Contents in this document are subject to change without notice.