

VERTEX-MG™ VR-M1 Generator Receptacle for up to 60kVDC



APPLICATION

The VERTEX-MG™ VR-M1 is a mammogram machine supporting socket.

STANDARD

These assemblies comply with NEMA XR-7 standards.

FEATURE

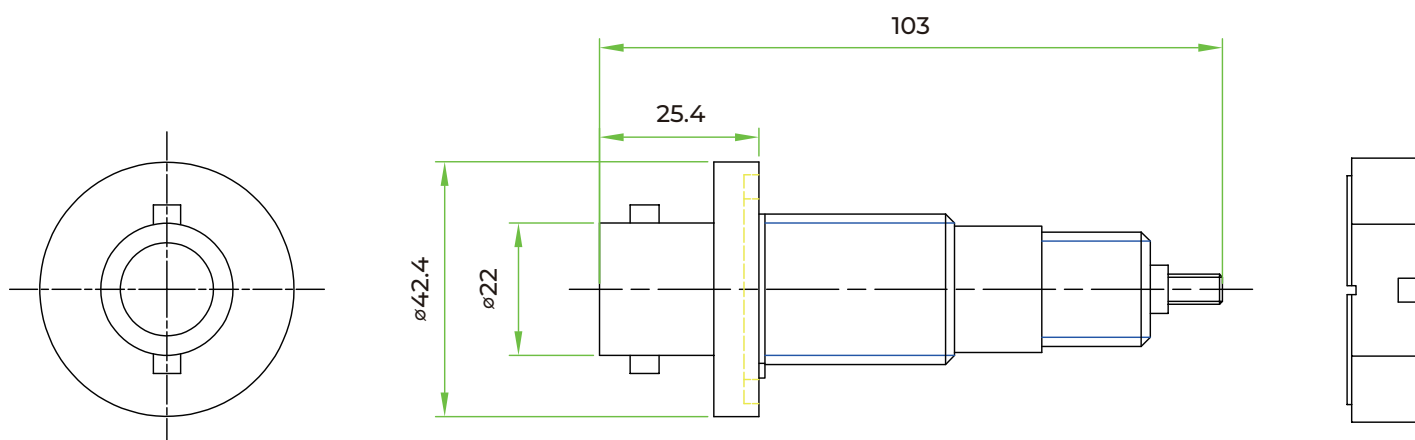
- Thermoplastic insulation material is used for injection molding.
- High temperature resistance 130 °C.
- Rubber ring seal.
- Very high insulation resistance.
- RoHS & REACH compliant.

MAIN TECHNICAL DATA

SPECIFICATION	REQUIREMENTS
Core	1
Rated Voltage	60kVDC
Test Voltage	75kVDC/15min
Maximum Conductor Current	25A
Maximum Continuous Operating Temperature	100 °C
Air tightness	0.304MPa

DIAGRAM

VERTEX-MG™ VR-M1



HIGH-PERFORMANCE CABLE SOLUTION

TWB-Germany GmbH

Add: Kolonnenstr.8, 10827 Berlin, Germany

E-mail: rolf.kaiser@twb-germany.com

Tel: +49 171 5544253

URL: www.twb-germany.com

The data in this document is for reference only. Contents in this document are subject to change without notice.