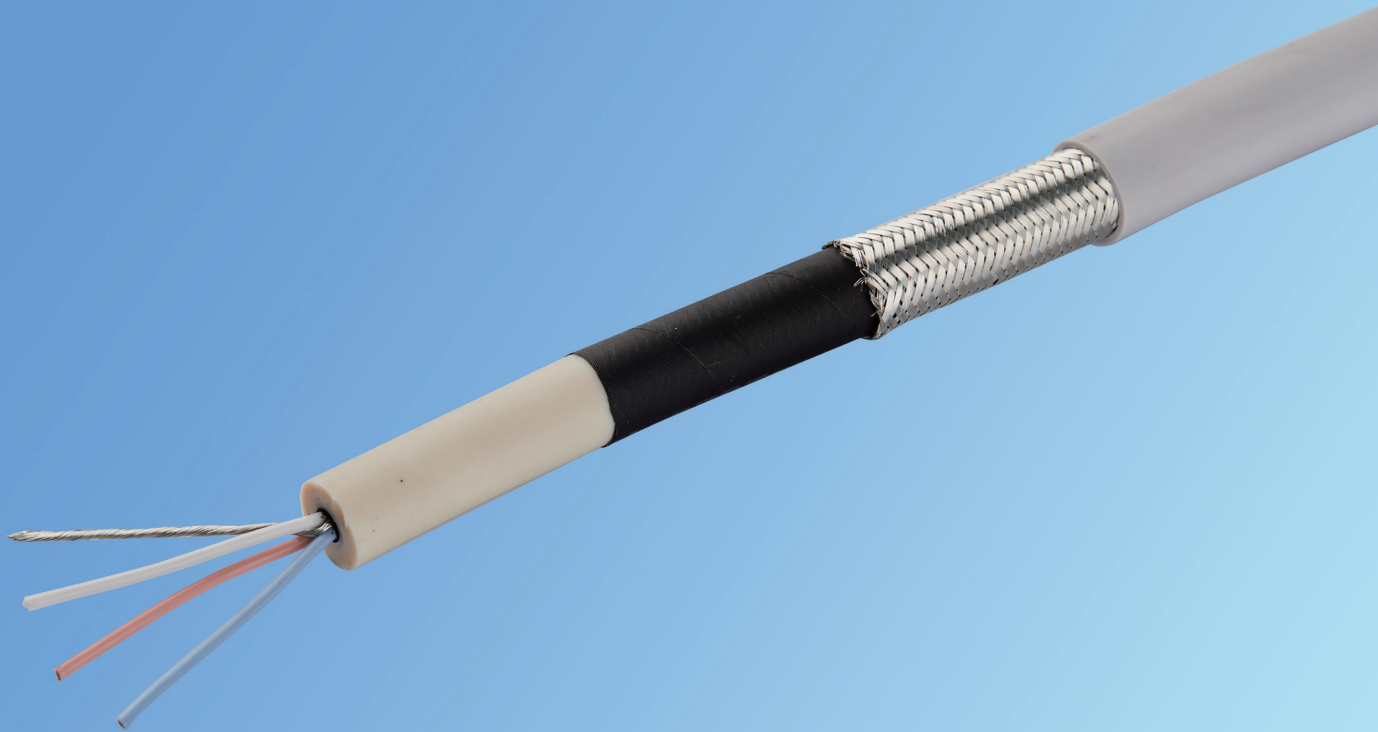




HIGH-PERFORMANCE CABLE SOLUTION

## VERTEX-R™ VTX-R4-type 75kVDC rated High Voltage Cable



### APPLICATION

The VERTEX-R line is designed specifically for Radiographic X-ray applications such as standard X-ray, computed tomography and angiography equipment.

### STANDARD

Enterprise standard for DC high-voltage cables for X-ray equipment.

### FEATURE

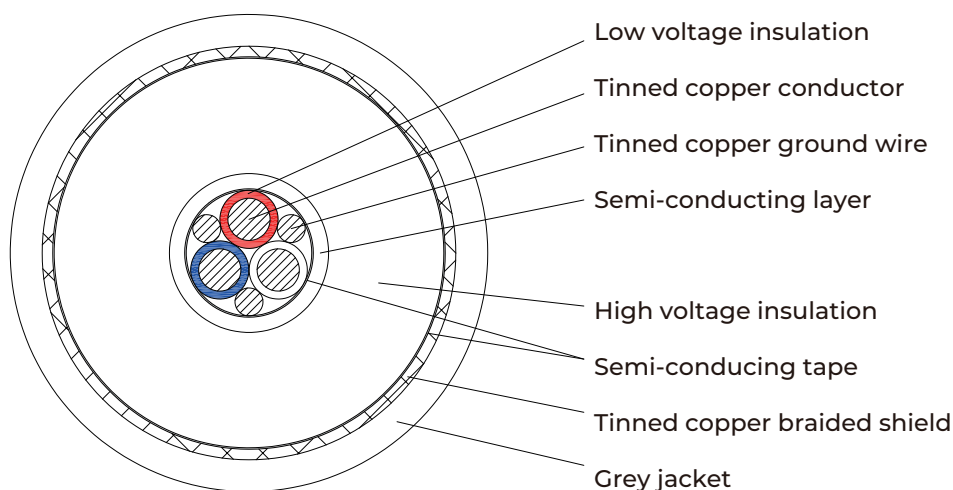
- Low capacitance.
- High flexibility.
- Small diameter.
- 95% cable shield braid density.
- RoHS & REACH compliant.

## MAIN TECHNICAL PARAMETER

SPECIFICATION	REQUIREMENTS
Rated Voltage	75kVDC
General test voltage (high voltage insulation)	120kVDC/10min
Rated voltage (conductor insulation)	2kVAC
Maximum conductor current	15A
Nominal diameter	19.0±0.5mm
Insulation resistance of conductor core to shielding at 20 °C	$\geq 1 \times 10^{12} \Omega \cdot m$
conductor resistance DC at 20 °C	11.9mΩ/m±10%
Bare ground wire resistance DC at 20 °C	11.9mΩ/m±10%
Capacitance between conductor and shield	145±14pF/m
Minimum static bending radius	<45mm
Minimum dynamic bending radius	<90mm
The cable has undergone 100000 bending and twisting cycles	normal operation
Transport and storage temperatures	-40 °C~+70 °C
Operating temperature	-10 °C~+70 °C
Net weight	434kg/km

## DIAGRAM

VERTEX-R™ VTX-R4



White Red and Blue insulation is 1.5mm<sup>2</sup>, The ground wire is 1.5mm<sup>2</sup>.



HIGH-PERFORMANCE CABLE SOLUTION

TWB-Germany GmbH

Add: Kolonnenstr.8, 10827 Berlin, Germany

E-mail: rolf.kaiser@twb-germany.com

Tel: +49 171 5544253

URL: [www.twb-germany.com](http://www.twb-germany.com)

The data in this document is for reference only. Contents in this document are subject to change without notice.